
PROJECT: DAVID STREET STATION
200 SOUTH DAVID STREET
CASPER, WYOMING 82601

ADDENDUM NUMBER TWO

This addendum number one dated Thursday September 8, 2016 is hereby appended to and became a part of the Contract Documents for the David Street Station, 200 South David Street, Casper, Wyoming. Drawings and specifications dated May 10th, 2016.

GENERAL

CHANGE: The contact information for the below general contractor:

COMPANY	CITY, ST	PHONE	FAX
Sampson Construction	Cheyenne, WY	307-426-4050	307-426-4051
Mid-Valley General Contractors	Riverton, WY	307-856-3421	307-857-4041

ARCHITECTURAL DRAWINGS

General

CLARIFY: "1 x reclaimed Snow fence" noted on the drawings to be 1x Wyoming recycled snow fence as supplied by Centennial Woods, Laramie, Wyoming.

CLARIFY: For clear powder coat finished noted on the drawings, it applies to base bid and all alternates. A mill steel finish beneath the clear powder coat finish is desired; protect steel from weathering so that minimal rust removal is required prior to powder coat application and use non-mechanical means for rust removal.

Sheet 0.20

CLARIFY: In the event Alternates # 2 and/or # 3 are not accepted, the contractor is to clear/level the area of Alternate #2 and #3 in preparation for owner-provided seeding.

Sheet 0.20 and 1.05

CLARIFY: Alternate #2 and Alternate #3 are stand-alone; do not include one alternate within the other. Alternate #2 has been designed so the remainder of the work in Alternate #3 will create a fully complete building and systems. For Alternate #3, the contractor shall remove the wood framed roof shown in the Alternate #2.

Sheet 1.90

CLARIFY: Detail 8: Provide 2x wood planks in longest lengths possible. Provide half lap splice at end-to-end horizontal joints.



LANDSCAPE DRAWINGS

General

CLARIFY: Written quantities provided on the plans are for the convenience of the contractor and for owner information, but do not represent maximum actual quantities. Contractor is responsible for providing the quantity of materials necessary to produce the construction shown on the plans.

CLARIFY: Tree protection shall be installed immediately upon initiation of work by the contractor.

Sheet L-2

CHANGE: The Tree Grate should be identified as the “Chinook 2000”. See the layout plans and Detail 1, Sheet L-24 for where Paver Frames and Standard Frames are required based upon adjacent paving material type.

Sheet L-4

CHANGE: See revised Sheet L-4a attached for clarifications regarding the locations of the seat walls in Detail 2 “Concrete Edge and Wall at Lawn” on revised Sheet L-22a also attached. Section letter designations have been added to the detail and shown on the plan. In addition, “Section I – Concrete Band” is applicable wherever concrete exists between brick pavers and planters creating a concrete area the width of half of the diagonal of the 24” x 24” promenade post footing formed top.

Sheet L-6

CLARIFY: See revised Sheet L-6a attached for area at trash enclosure that should be designated as Type 1B concrete, increasing the total Type 1B Base Bid area to approximately 1,385 SF (see General Note regarding provided quantities).

CLARIFY: Locations for the nine (9) permanent bollards will be provided by the landscape architect upon request.

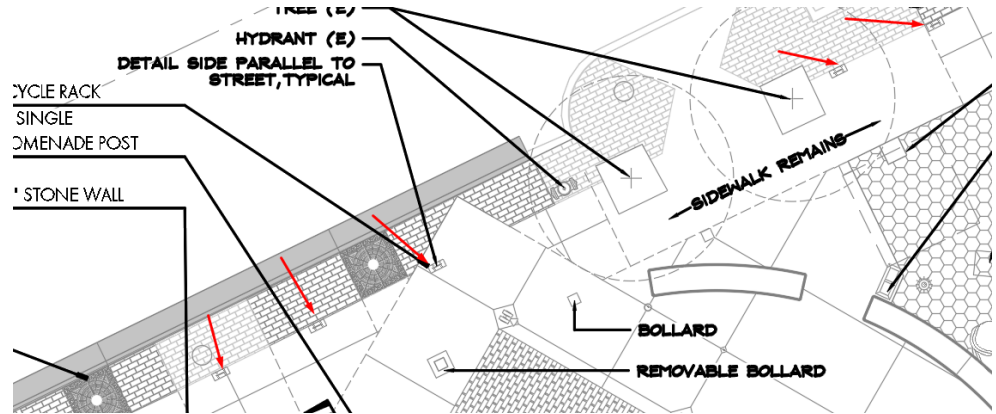
CLARIFY: Asphalt surfacing specifications are provided on Sheet 1.01.

CHANGE: Text on Sheet L-6 in Misc Surfaces Finish Schedule, Lawn to state: the Synthetic Lawn shall be “SYNTIPEDE 354 OVER ULTRABASESYSTEMS PROFESSIONAL PANEL” to match the detail on L-22.

No specification is provided for the Synthetic Lawn product. Use specified manufacturer’s full specification for designated product.



CLARIFY: Single bike racks five (5) are only along W. Yellowstone, locations denoted by red arrows in partial sketch below:



Sheet L-10

CHANGE: See revised Sheet L-10a attached for locations of type BL curb. Type P is indicated on plans as “Flush”

Sheet L-11

CHANGE: See revised sheet L-11a and b attached for additional spot grades around the stage area.

Sheet L-13

CHANGE: Quick Coupler shall be ¾” Rainbird 33-DLRC ¾” (20/27) Double Track Key Lug, or equal. See revised Detail 9 Sheet L-29a.

CLARIFY: Both irrigation valves indicated on plan are required. Valve type “XCZ” is mislabeled as “XACZ”. Refer to manufacturer’s standard detail for installation requirements.

CLARIFY: 1 Air Relief Valve is required at high point of mainline (within Phase 1). 1 Drain Valve is required along each branch of mainline (two (2) in Base Bid, one (1) in Alternate # 3).

CLARIFY: Contractor shall coordinate installation of irrigation water meter and service tap with the City of Casper (307) 235-8400. City shall provide and install City Water Meter. Contractor is responsible for all other related appurtenances and installation.

CLARIFY: Either Hunter or Rainbird Root watering systems are allowed.



Sheet L-14

CLARIFY: Project Tree Schedule: Tree sizes: Multi-stem B&B trees are indicated in tree callouts and shall have a minimum of three trunks with a cumulative caliper of 1-1/2". Single stem deciduous B&B trees shall have a caliper of 1-1/2" minimum. Evergreen trees shall be measured by height only.

Sheet L-17

CHANGE: See revised sign size and notes on L-17a attached for size and type of material of the larger signs.

Sheet L-19

CLARIFY: All trench drains shall be "Double Wave" (another type is shown in the detail).

Sheet L-24

CLARIFY: Six (6) waste receptacles shall be provided in the Base Bid. Two (2) shall be provided in Alternate #3.

DELETE: Seasonal rubber mat identified in Detail 80 (to be provided and installed by owner).

Sheet L-27

CHANGE: See Sheet L-27a attached. Detail 1 has been renamed "48" Stone Wall". Its location is described in Planter Elevation E on Sheet L-27 and on Sheet L-4.

CHANGE: See Sheet L-27a attached. Detail 4 has been corrected so the lower section is named "Boulders In Landscape". Concrete base below boulders is only required where boulder edges are set in concrete.

CIVIL DRAWINGS

Sheet 1.00

CHANGE: See the clouded areas on the attached Sheet 1.00 for revisions.

Sheet 1.03

CHANGE: See the clouded areas on the attached Sheet 1.03 for revisions.



STRUCTURAL DRAWINGS

Sheet 2.13

CHANGE: GATEWAY FOUNDATION PLANS: At the northeast gateway it has been determined that the subgrade is not lean concrete as previously thought. The in place soils are sands. However an existing 16" thick foundation wall exists as shown on the attached partial sheet 2.13 that must be partially removed per the attached plan. This wall is unreinforced concrete. The in place sands must be sub-excavated 2'-0" below footing subgrade, moisture conditioned and re-compacted to 95% ASTM D698 density.

Sheet 2.20

CHANGE: GENERAL NOTES: General notes section X-B. Footings are to be placed on undisturbed native soils. If footing subgrade soils are disturbed they shall be scarified 8" deep, moisture conditioned and re-compacted to 95% ASTM D698 density.

ELECTRICAL DRAWINGS

General

CLARIFY: The electrical contractor shall review all sheets, including architectural, civil, landscaping, splash pad, ice rink, and audio visual for specific electrical items that are not shown on the electrical sheets.

Sheet 16.00

CLARIFY: Flag note 8 refers to the location of the light fixture used for lighting the flag pole. This light fixture is not located on the flag pole and this note does not indicate the location of the flag pole. See the landscape drawings for the flag pole location. The light fixture noted is to be aimed at the flag.

Sheet 16.01

CLARIFY: Per Civil drawing 1.02 the electrical contractor shall refer to the utility company design for layout, quantity, and size of conduit, vaults, transformers, etc. required by the utility company.

SHEET 16.02

CLARIFY: See Civil drawing 1.02 for location of utility pole for telephone service to the building.



SPLASH PAD DRAWINGS

Sheet 17.12

- CLARIFY:** Splash Pad Schedule:
Item 11: The sentence “All sealant colors are standard colors” has been added to the remarks.
Item 12: The sentence “All sealant colors are standard colors” has been added to the remarks.
Item 13: The sentence “All sealant colors are standard colors” has been added to the remarks.

Sheet 17.18

- CHANGE:** The Circulation Equipment Schedule and Notes sheet has been revised to clarify the following: Splash Pad Circulation Equipment Schedule: Item 3 C: The size of the basket strainer mesh and the order of installation of the basket strainers has been clarified in the remarks.

SPECIFICATAIONS

General:

- CHANGE:** Use the attached Revised Bid Form.

Section 01 1000 – 1.04, B, 2:

- DELETE:** Donor Wall / Art Sculpture.

Section 01 5000 – 1.08, A:

- CLARIFY:** Provide site security via fenced/locked enclosure; personnel/patrol is not required.

Section 05 1200 – 2.1, G:

- DELETE:** Delete paragraph.

Section 07 2100 – 2.02, B:

- CHANGE:** 7. Exterior facing: minimum 1.25 mil embossed thermoset coated aluminum.

- CHANGE:** 8. Interior facing: minimum 0.9 mil smooth reflective aluminum.

Section 07 54000 – 2.03, A, 3:

- CHANGE:** Change thickness to 0.060 inch, minimum.

Section 08 4313 – 2.03, C, 2:

- CHANGE:** Change style to wide.



Section 08 4313 – 2.03, C:

ADD: Paragraph 4. Flush style aluminum storefronts as indicated on the drawings, manufactured by Special-Lite Engineered Architectural Solutions.

Section 10 1400:

CHANGE: See attached SECTION “101400 – SIGNAGE -Site Signs” for clarification regarding signs indicated on Sheet L-17.

Section 32 1319 – 2.4, B, 2:

CHANGE: Color selected by Architect from manufacturer’s standard full range.”

LIST OF APPROVED PRODUCT SUBSTITUTIONS

Specified Product: Sika Corporation – Sarnafil PVC and others - Section 07 5400, 2.01, A
Approved Substitution: Versico Roofing Systems - VersiFlex PVC Roofing System

Specified Product: Raynor Doors – Alumaview AV200 – Section 08 3613, 2.01, A
Approved Substitution: Overhead Door Co. – Model 521

Specified Manufacturer: Desco Architectural Inc. – Section 08 4313, 2.03, D, 2
Approved Substitution: Manko Window Systems, Inc.

Specified Product: Bradley Corporation – Section 22 4200, 2.01, D
Approved Substitution: Acorn – Meridian 3803 Series

Specified Manufacturer: Cook - Section 23 3720
Approved Manufacturer: Greenheck.

Specified Manufacturer: MetalAire - Section 23 3710
Approved Manufacturer: Price.

Light Fixtures – Sections 265100 and 265600

1. Type A
 - a. Cole Lighting
 - b. H.E. Williams
2. Type B
 - a. Spaulding Lighting
3. Type B1
 - a. Hubbell Outdoor Lighting
4. Type C
 - a. Lumascape
5. Type EM
 - a. Dual Lite
6. Type F
 - a. Lumenoptix



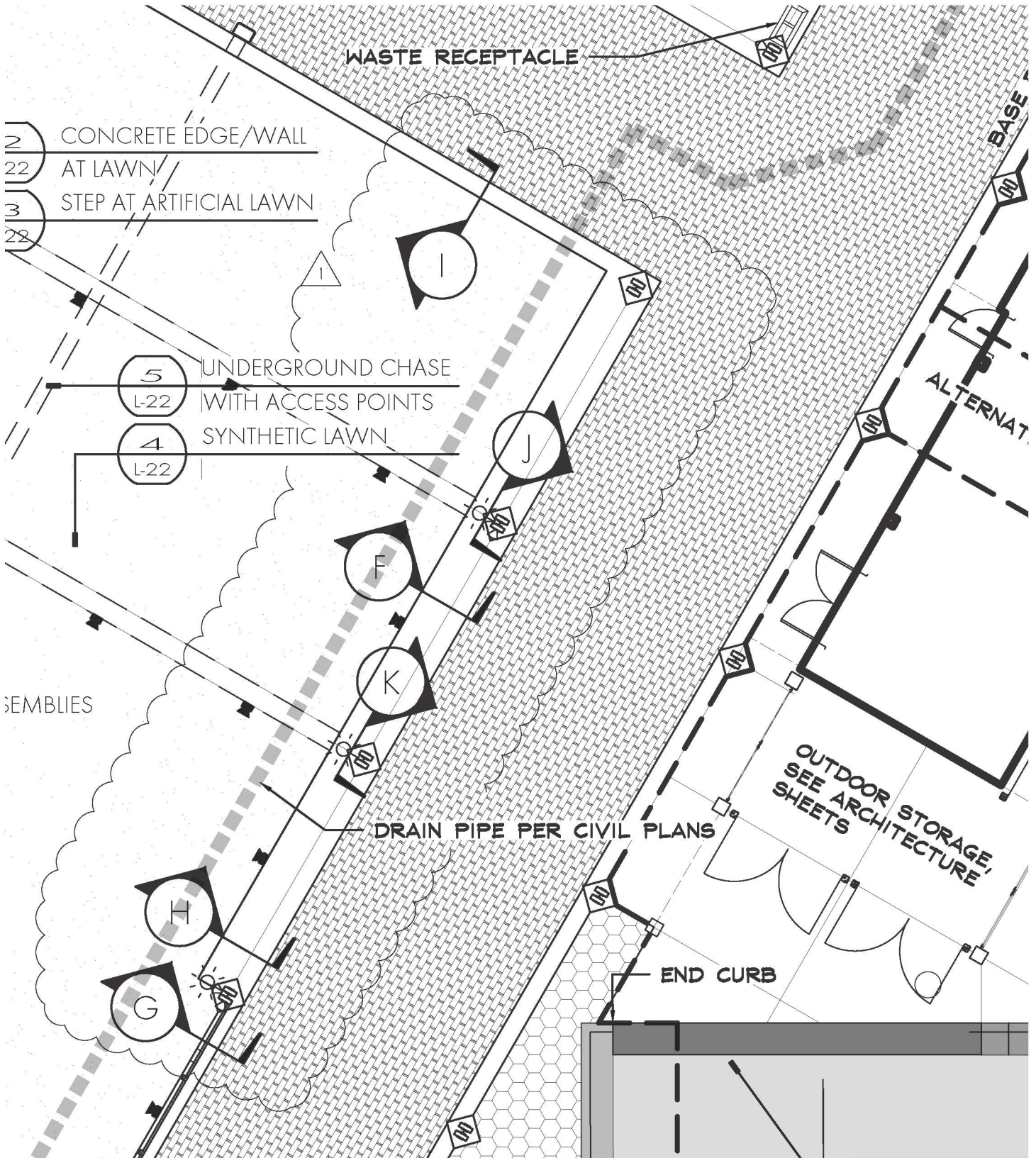
- b. LSI
- 7. Type G
 - a. Columbia
 - b. LSI
- 8. Type H
 - a. Luminaire LED
- 9. Type H1
 - a. Luminaire LED
- 10. Type H2
 - a. Luminaire LED
- 11. Type J
 - a. Hubbell Outdoor Lighting

Variable Frequency Drives – Section 262923

- 12. Eaton

END OF ADDENDUM NUMBER TWO.





www.tallgrasslandscapearchitecture.com

413 North 4th Street
Custer, SD 57730
605.673.3167

TALLGRASS
Landscape Architecture for the American West

Project: David Street Station

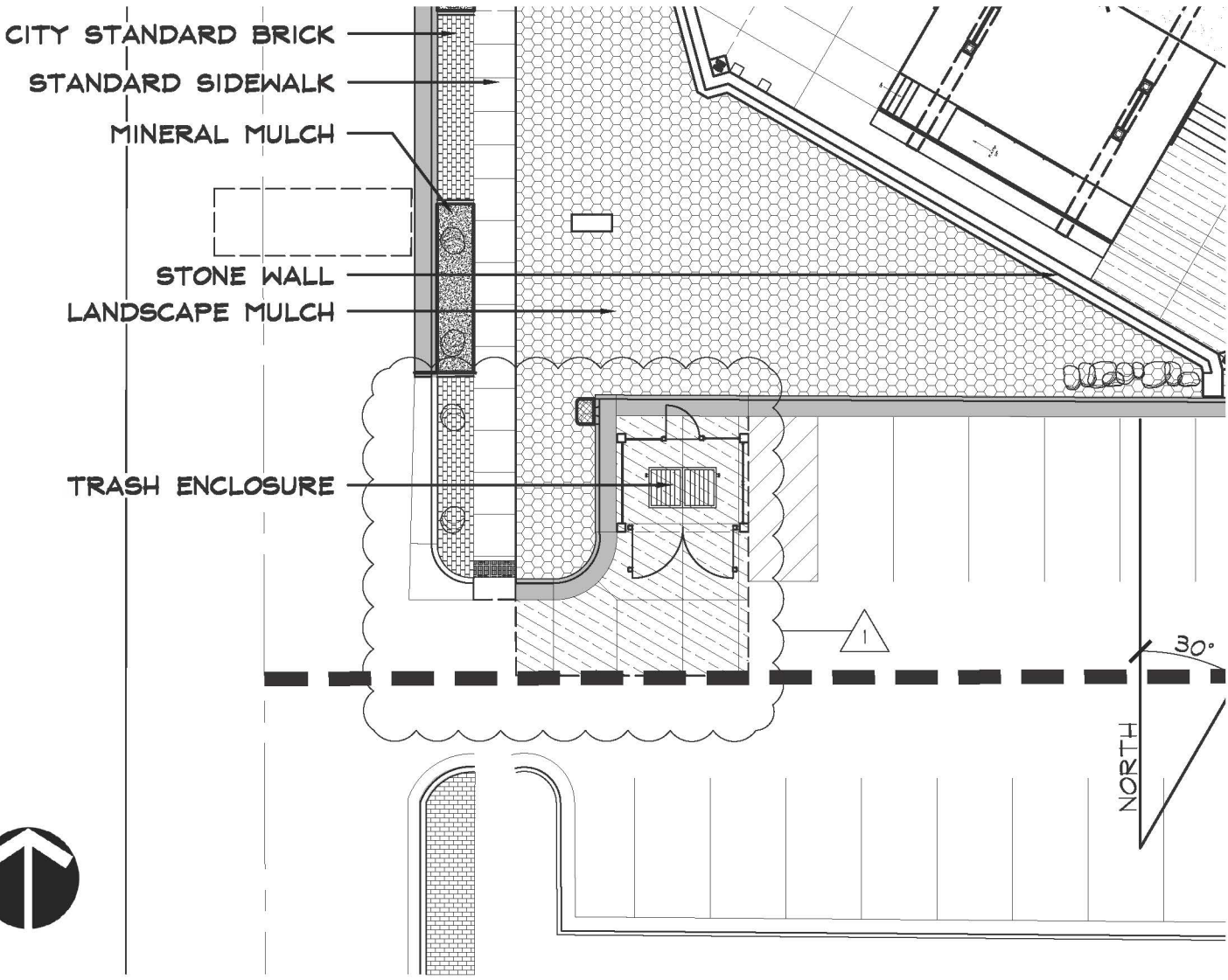
Addenda #2

Sheet Name: Revised Site Plan Detail 01

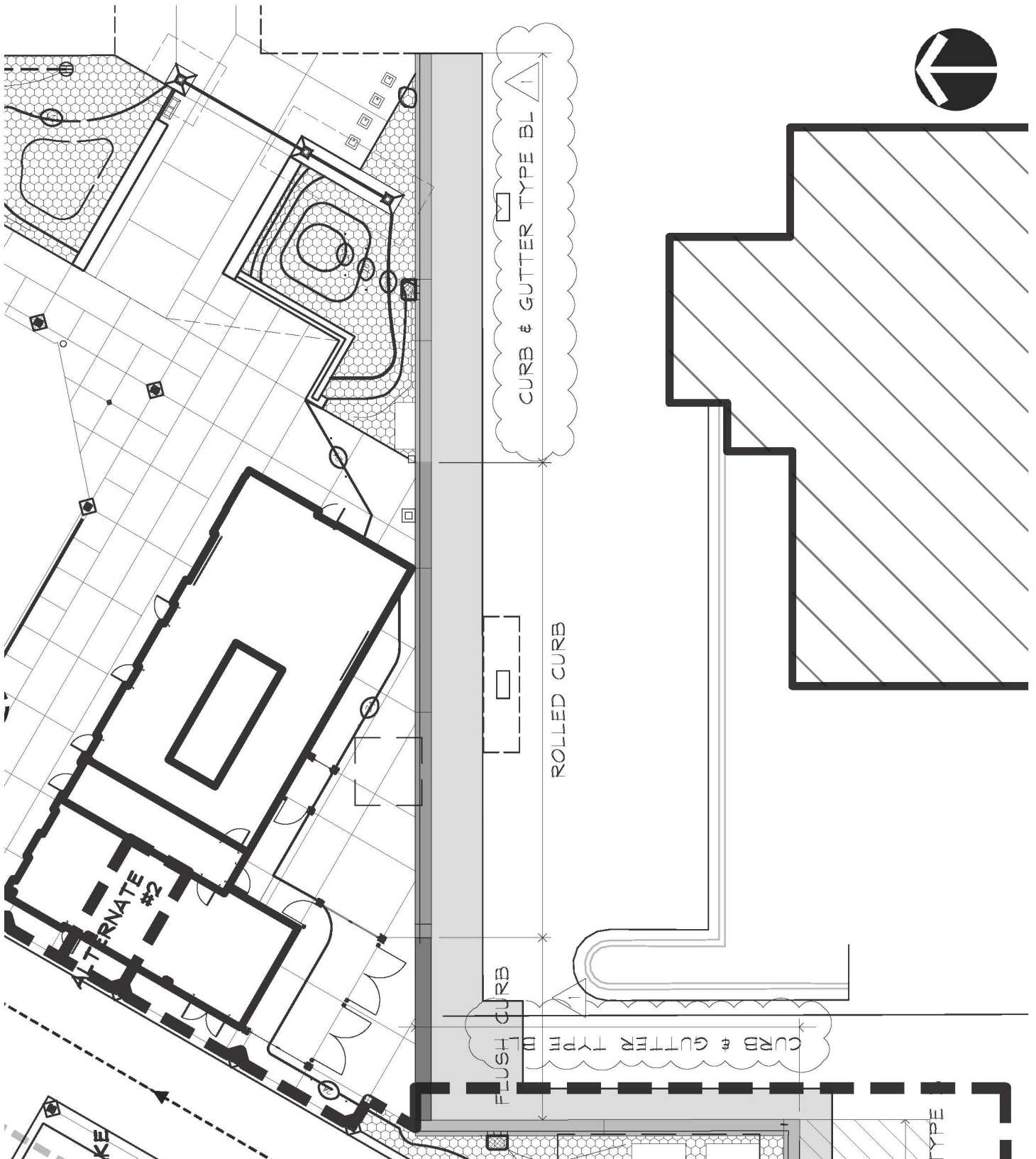
By: MDF Date: Sept. 8, 2016

L-4a

	5,943 SF BASE BID	"SEDONA" FROM WILLOW CREEK PERMEABLE PAVERS WILLOWCREEKPAVINGSTONES.COM	
LAWN	5,545 SF BASE BID	SYNTHETIC LAWN: SYNTIPEDE 354 OVER ULTRABASESYSTEMS PROFESSIONAL PANEL FROM SYNLAWN OF SOUTH DAKOTA, RAPID CITY, SD SMARTLAWN, LLC OFFICE: 605.340.0863	
	531 SF ALT. #3	CASPER MT. ENTRANCE BRICK PAVERS: 8CM BRICKSTONE TRADITIONAL TEXTURE "SEDONA" FROM WILLOW CREEK	



www.tallgrasslandscapearchitecture.com 413 North 4th Street Custer, SD 57730 605.673.3167 TALLGRASS Landscape Architecture for the American West	Project:	David Street Station	Addenda #2
	Sheet Name:	Revised Layout Plan	
	By: MDF	Date: Sept. 8, 2016	L-6a



www.tallgrasslandscapearchitecture.com

413 North 4th Street
Custer, SD 57730
605.673.3167

TALLGRASS
Landscape Architecture for the American West

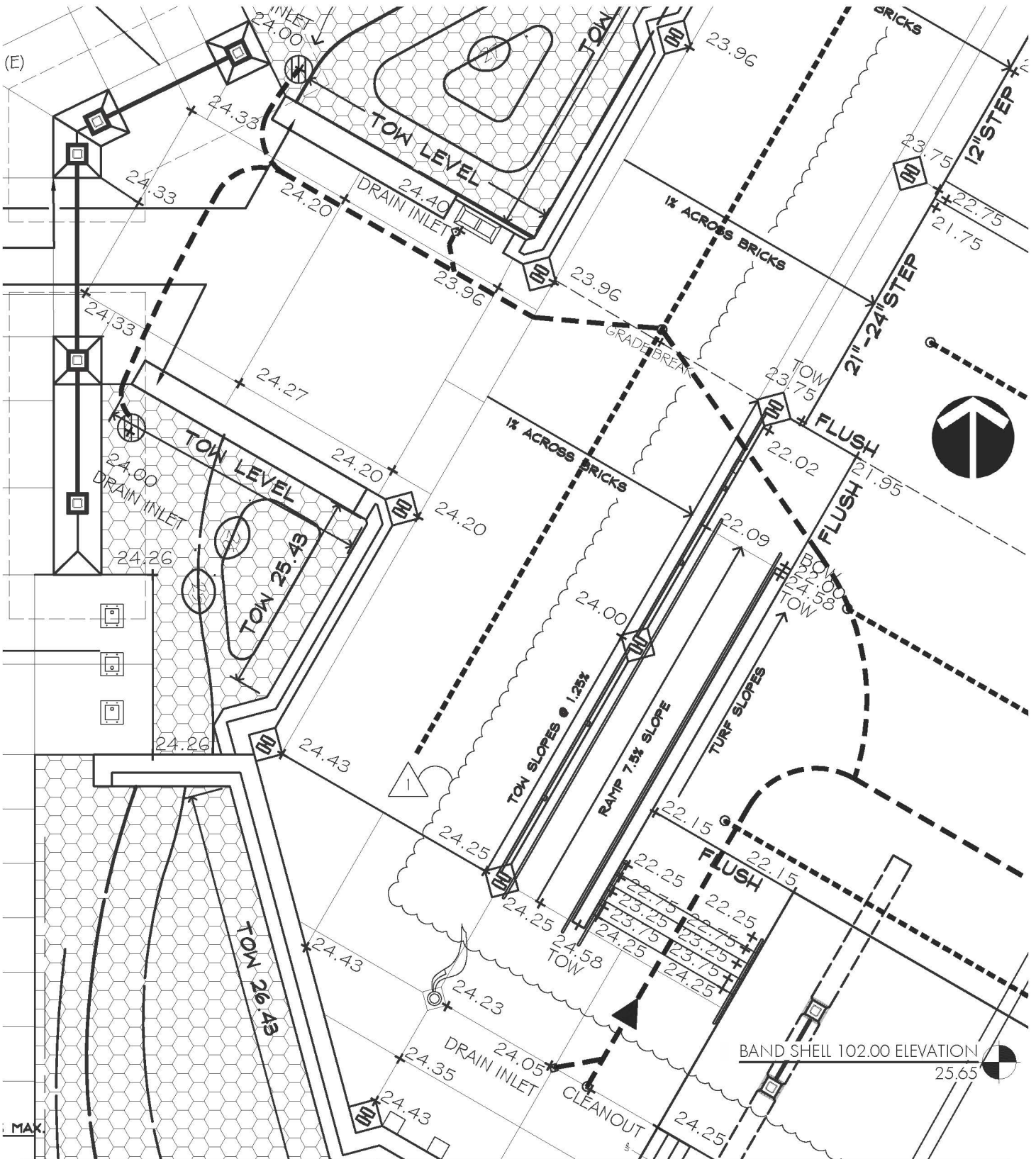
Project: David Street Station

Sheet Name: Revised Overall Grading & Drainage Plan

By: MDF Date: Sept. 8, 2016

Addenda
#2

L-10a



www.tallgrasslandscapearchitecture.com



413 North 4th Street
Custer, SD 57730
605.673.3167

TALLGRASS
Landscape Architecture for the American West

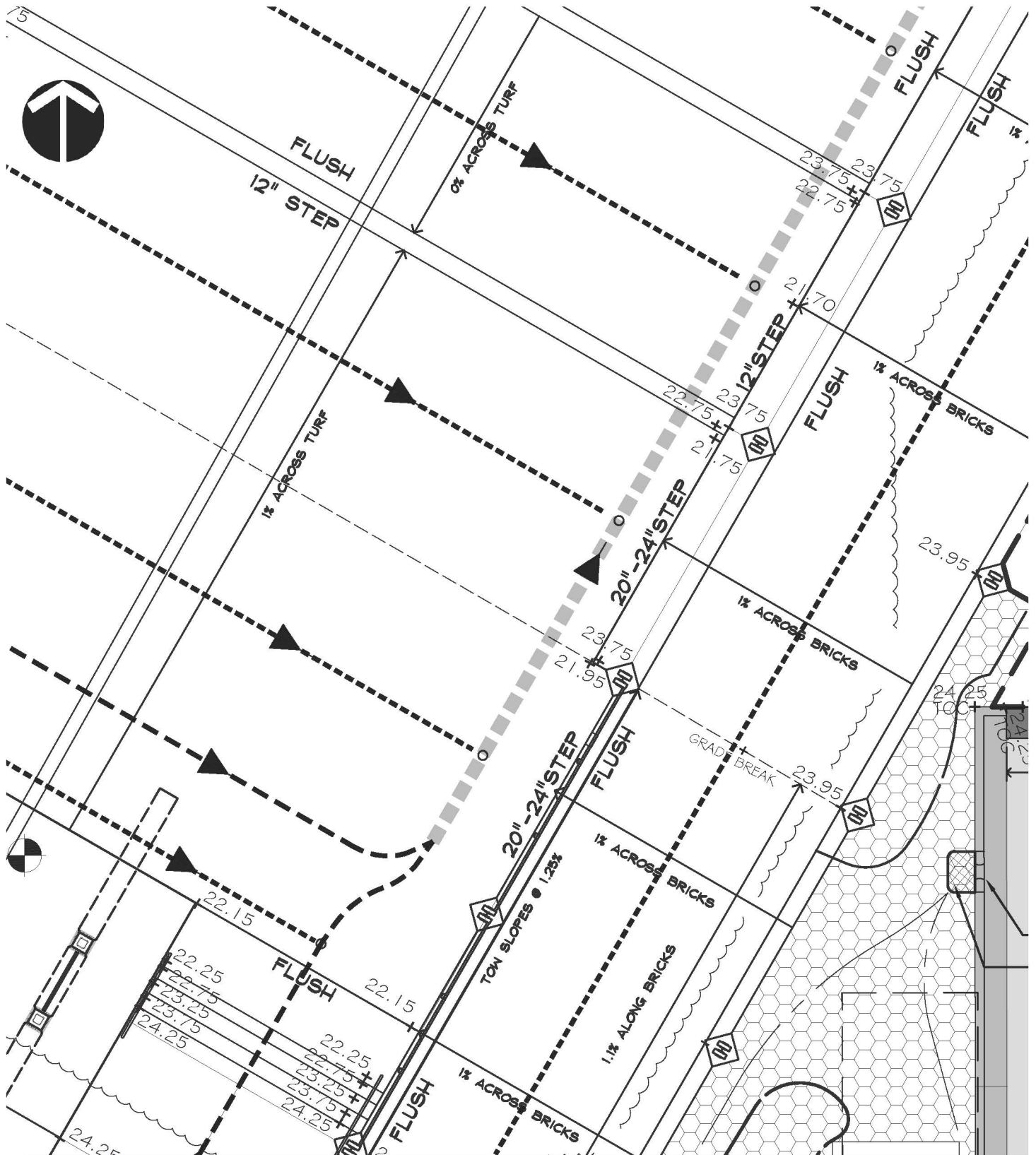
Project: David Street Station

Sheet Name: Revised Partial Grading
Drainage Plan - Detail 01

By: MDF Date: Sept. 8, 2016

Addenda
#2

L-11a



www.tallgrasslandscapearchitecture.com

413 North 4th Street
Custer, SD 57730
605.673.3167

TALLGRASS
Landscape Architecture for the American West

Project: David Street Station

Sheet Name: Revised Partial Grading
Drainage Plan - Detail 01

By: MDF

Date: Sept. 8, 2016

Addenda
#2

L-11b

req												
	4 X 4											
	4 X 4	ALUMINUM	1	2	MOUNT ON FACE OF POST							
	4 X 4	ALUMINUM	1	1	MOUNT ON FACE OF POST ABOVE THE OUTLET							
	5 X 5	ALUMINUM	1	3	MOUNT ON FACE OF POST							
	10 X 10	ALUMINUM	1	2	MOUNT ON FACE OF WALL							
	SEE DETAIL	ALUMALITE	0	1	MOUNT ON POST IN THE PLANTING BED SEE DETAIL 3, SHEET L-24							
	10 X 10	ALUMINUM	0	1	MOUNT ON FACE OF POST							
	10 X 10	ALUMINUM	1	1	MOUNT ON FACE OF POST							
	10 X 10	ALUMINUM	2	0	MOUNT ON FACE OF POST							
	10 X 10	ALUMINUM	1	0	MOUNT ON FACE OF POST							
	30 X 14	ALUMALITE	0	1	MOUNT ON DASHBOARD SEE DETAIL 8, SHEET L-24							

NOTES:
 1. FIN CC AN SU API
 2.

NO SPITTING,
 NO VAPING,
 NO DOGS

OUTLET HOURS

SOCIAL MEDIA

PLAZA RULES

SPLASH PAD SAFETY,
 PERSONAL HYGIENE,
 & BEHAVIORAL RULES

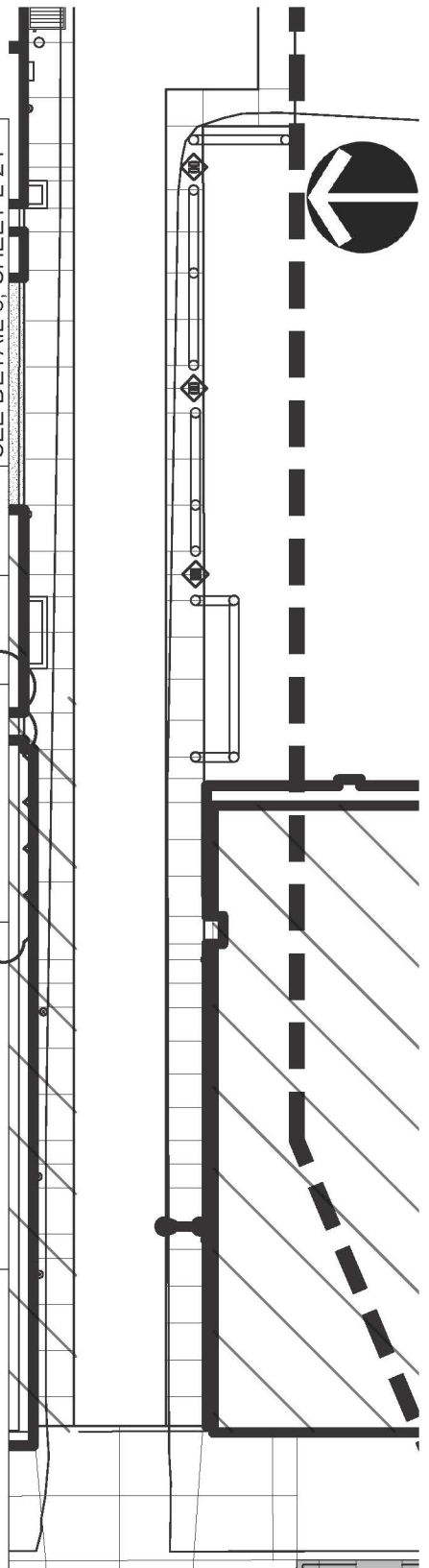
FIRE PIT SAFETY

BUSKING STATION

BAND SHELL RULES

EMERGENCY

ICE RINK SAFETY



www.tallgrasslandscapearchitecture.com

413 North 4th Street
 Custer, SD 57730
 605.673.3167

TALLGRASS
 Landscape Architecture for the American West

Project: David Street Station

Sheet Name: Revised Signage Plan

By: MDF

Date: Sept. 8, 2016

Addenda #2

L-17a

Project: David Street Station

Addenda
#2

Sheet Name: Revised Detail 05

L-22a

DETAIL NOT TO
ORIGINAL SCALE

By: MDF

Date: Sept. 8, 2016

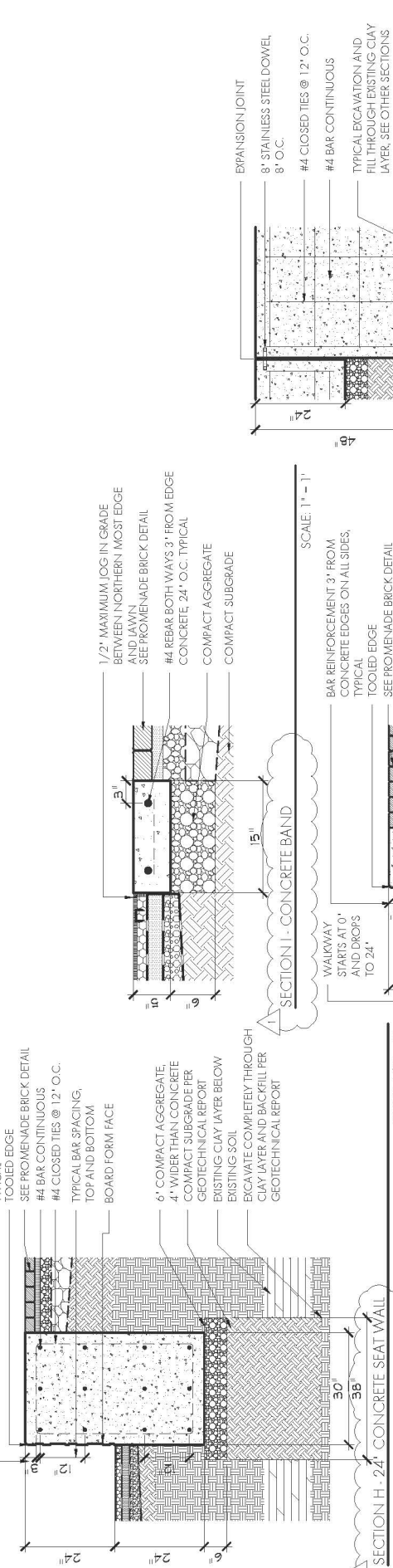
SECTION - BAND SHELL SNAKE

SCALE: 1/2" = 1'

3 CONCRETE LAWN STEPS

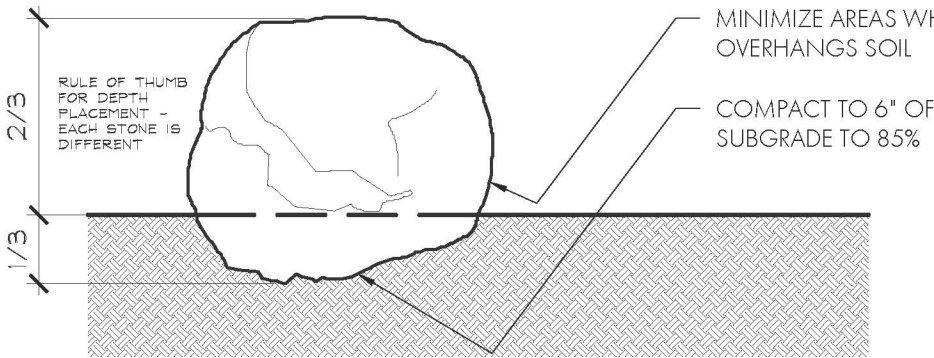
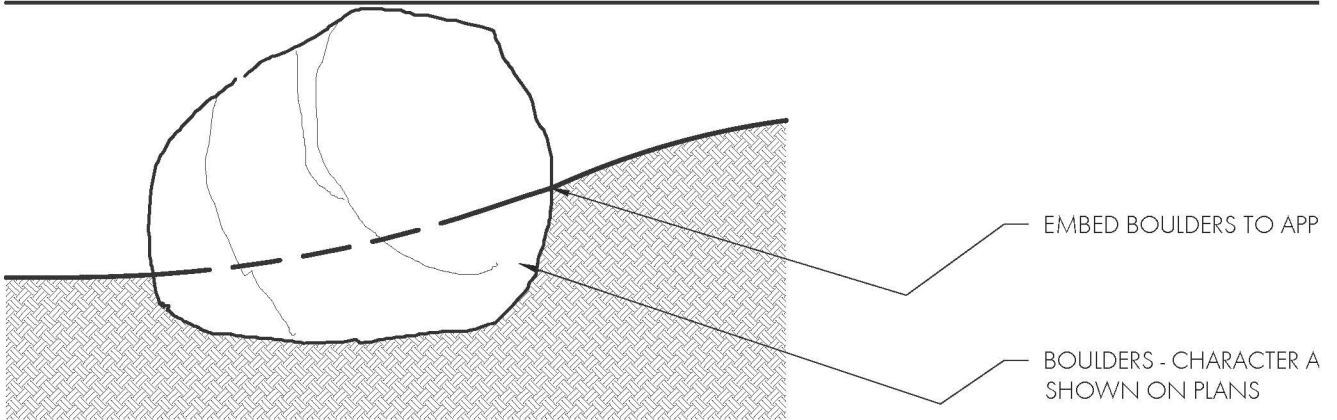
5 UNDERGROUND CHASE PIPE WITH ACCESS POINTS

2 CONCRETE EDGE & WALL AT LAWN





TYPICAL SECTION - ENTRY LOCATION WHERE BOULDER IS IN CONCRETE



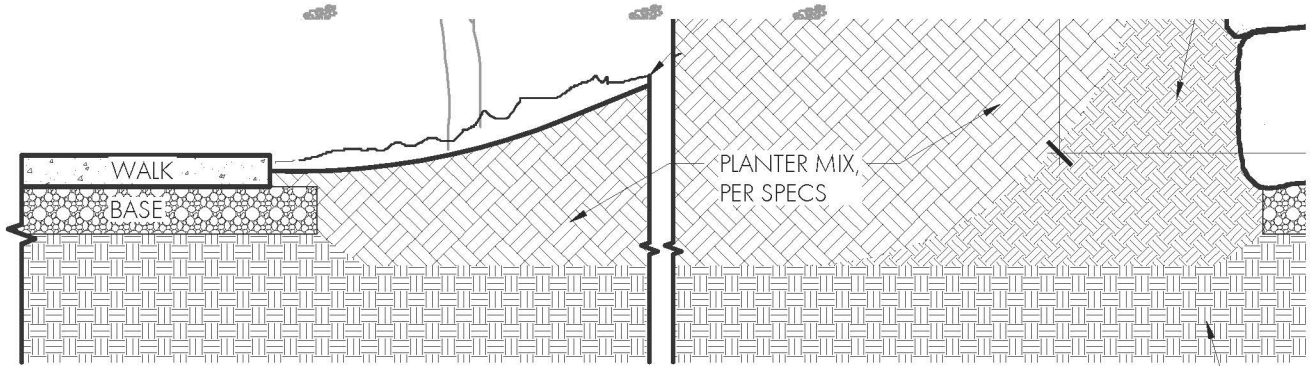
NOTES:

1. SEE PLANS FOR LOCATION & NC
2. ALL BOULDERS TO MATCH CHAR AND TYPE. SIZES TO VARY AS RE
3. ALL BOULDERS SHALL BE APPROVE LANDSCAPE ARCHITECT AND OV
4. PROTECT BOULDERS DURING PLACEMENT TO MINIMIZE SCAR FINAL EXPOSED SURFACES

TYPICAL SECTION - BOULDERS IN LANDSCAPE

BOULDERS

4



SECTION - PLANTER

48" STONE WALL

1

www.tallgrasslandscapearchitecture.com

413 North 4th Street
Custer, SD 57730
605.673.3167

TALLGRASS
Landscape Architecture for the American West

Project: David Street Station

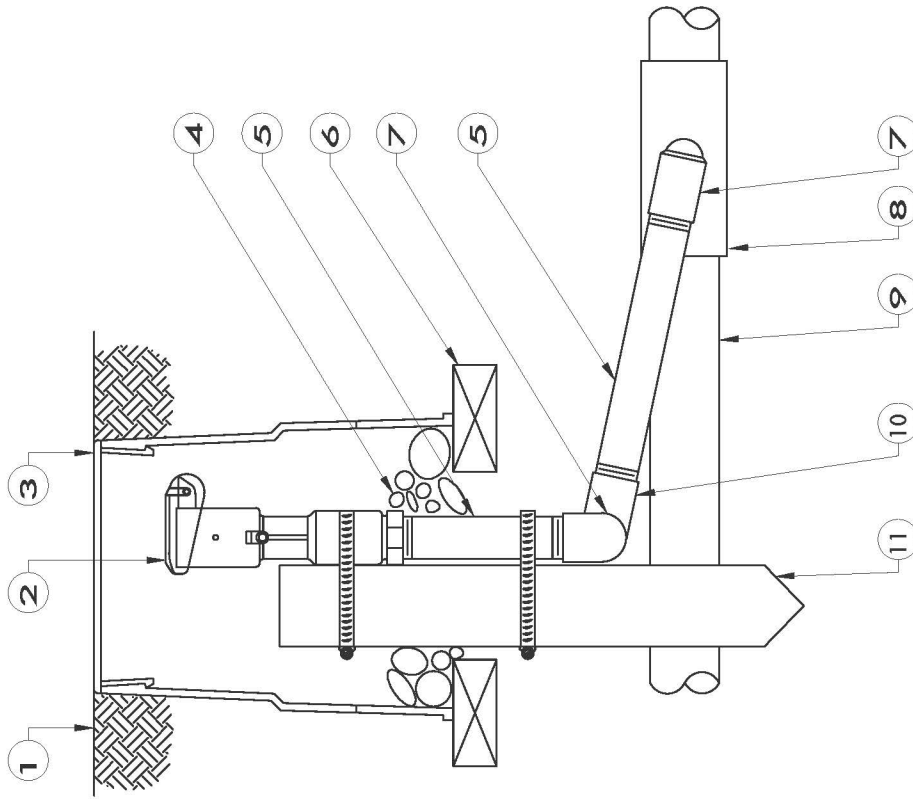
Addenda #2

Sheet Name: Revised Details 10

By: MDF Date: Sept. 8, 2016

L-27a

REDUCED PRESSURE BACKFLOW PREVENTION DEVICE



- KEY:
1. FINISHED GRADE/TOP OF MULCH
 2. QUICK COUPLER VALVE: RAIN BIRD MODEL 33 DLRC
 3. VALVE BOX WITH COVER: RAIN BIRD VB-6RND
 4. 3" MINIMUM DEPTH OF 3/4" WASHED GRAVEL
 5. PVC SCH 80 NIPPLE (LENGTH AS REQUIRED)
 6. BRICK (1 OF 2)
 7. PVC SCH 40 STREET ELL
 8. PVC SCH 40 TEE OR ELL
 9. PVC MAINLINE PIPE
 10. PVC SCH 40 ELL
 11. 2" X 2" REDWOOD STAKE WITH STAINLESS STEEL GEAR CLAMPS OR EQUIVALENT SUPPORT SYSTEM

NOTE:
 1. FURNISH FITTINGS AND PIPING NOMINALLY SIZED IDENTICAL TO NOMINAL QUICK COUPLER VALVE INLET SIZE.

QUICK COUPLER - 33 DLRC

10

9

www.tallgrasslandscapearchitecture.com

413 North 4th Street
 Custer, SD 57730
 605.673.3167

TALLGRASS
 Landscape Architecture for the American West

Project: David Street Station

Addenda #2

Sheet Name: Detail 12

By: MDF

Date: Sept. 8, 2016

L-29a

SITE GRADING DISCLAIMER:
 EXISTING CONTOURS SHOWN ARE FROM PRE-DEMOLITION SURVEY AND ARE TO BE USED FOR BIDDING PROCESS. A POST-DEMOLITION SURVEY WILL BE PROVIDED BY THE OWNER FOLLOWING CONTRACT AWARD. PLEASE SEE BID FORM FOR A UNIT PRICE CUBIC YARD DEDUCT ITEM TO ACCOUNT FOR THE DIFFERENCE BETWEEN PRE-DEMOLITION AND POST-DEMOLITION SURVEY.

ADDENDUM 2
 (REVISED EXISTING SITE SURFACING PER TO DATE DEMO ACTIVITIES)

LEGEND

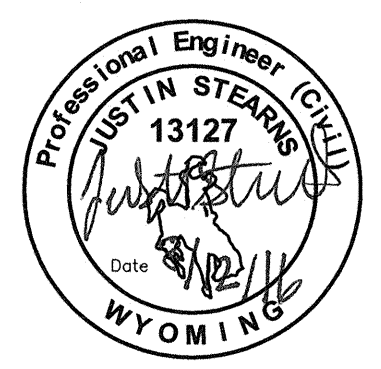
	REMOVE EX ASPHALT
	REMOVE EX CURB
	REMOVE EX CONCRETE

	PROPERTY BOUNDARY
	CLAY REMOVAL LIMITS
	EX MAJOR CONTOUR
	EX MINOR CONTOUR
	EX SANITARY
	EX WATER
	EX STORM
	EX POWER
	EX GAS
	EX COMMUNICATIONS
	EX TREE
	EX FIRE HYDRANT
	EX SAN MH
	EX STREET LIGHT
	EX ELECTRIC METER
	EX GAS METER
	EX POWER PEDASTAL
	EX INLET
	EX POWER POLE
	EX SIGN
	EX GUARD POST

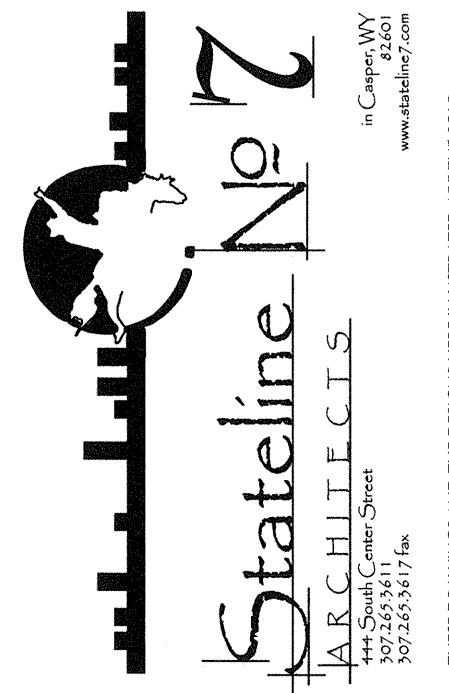
NOTES:

- REMOVE AND DISPOSE OF ASPHALT, BASE COURSE, AND UNSUITABLE SUBGRADE MATERIAL OF VARIOUS THICKNESS.
- REMOVE AND DISPOSE OF CONCRETE AND BASE COURSE OF VARIOUS THICKNESS TO SUBGRADE. REMOVAL SHALL INCLUDE EXISTING BRICK PAVING AS NECESSARY.
- REMOVE AND DISPOSE OF EXISTING CURB AND GUTTER. SAWCUT AND REMOVE 1.5' ASPHALT.
- REMOVE EXISTING WATER SERVICE TO CORP STOP. REMOVAL SHALL INCLUDE REMOVING AND REPLACING ALL ASPHALT, BASE COURSE, CONCRETE, SIDEWALK, AND CURB AND GUTTER AS NECESSARY. ALL SERVICE MAY NOT BE SHOWN.
- REMOVE EXISTING BUILDING SEWER SERVICE LINE INCLUDING CLEANOUTS TO MAIN.
- REMOVE AND DISPOSE OF ALL EXISTING TREES REMAINING ON SITE. CONTRACTOR SHALL NOT REMOVE ANY TREES WITHIN STREET R.O.W. ALL MAY NOT BE SHOWN.
- CUT AND ABANDON EXISTING 8" VC SEWER INCLUDING ALL MANHOLES UP TO NEW MH SHOWN ON SHEET 1.02. ABANDONED PIPE/MHS SHALL BE REMOVED AND DISPOSED OF BY CONTRACTOR. ANY SERVICE ENCOUNTERED WITHIN REMOVAL AREA SHALL BE REMOVED IN THEIR ENTIRETY PER NOTE 7.
- EXISTING OVERHEAD POWER TO BE REMOVED BY OTHERS. NEW UNDERGROUND POWER TO BE ACTIVE PRIOR TO OVERHEAD BEING REMOVED. EXISTING METER POLE NEAR YELLOWSTONE TO REMAIN PER ELECTRICAL DRAWINGS.
- EXISTING GAS SERVICES AND METERS TO BE REMOVED BY OTHERS. CONTRACTOR TO REMOVE MAIN LINE TO PROPERTY LINE. COORDINATE WITH GAS COMPANY
- EXISTING COMMUNICATIONS PEDESTAL TO REMAIN.
- REMOVE EXISTING SIGN
- REMOVE ALL CLAY MATERIAL TO SAND WITHIN THIS AREA. EXPECTED DEPTH IS 2'-5". REFER TO GEOTECH FOR BOREHOLES. BACKFILL WITH GRADING "J" OR SIMILAR APPROVED GRANULAR MATERIAL. BACK FILL SHALL BE INSTALLED IN 8" LIFTS AND COMPACTED TO 95% STANDARD PROCTOR AT +/-2% OF OPTIMUM MOISTURE CONTENT.
- R.O.W SURFACING REMOVAL SHALL BE COORDINATED TO ENSURE ALL ASPHALT, SIDEWALK AND CURB AND GUTTER IS REPLACED IMMEDIATELY ACCORDING TO LANDSCAPE PLANS.

ADDENDUM 2



DAVID STREET STATION
 200 SOUTH DAVID STREET
 CASPER, WYOMING 82601



PROJECT NUMBER
 15-015

DATE
 MAY 10, 2016

DRAWN BY
 JLS

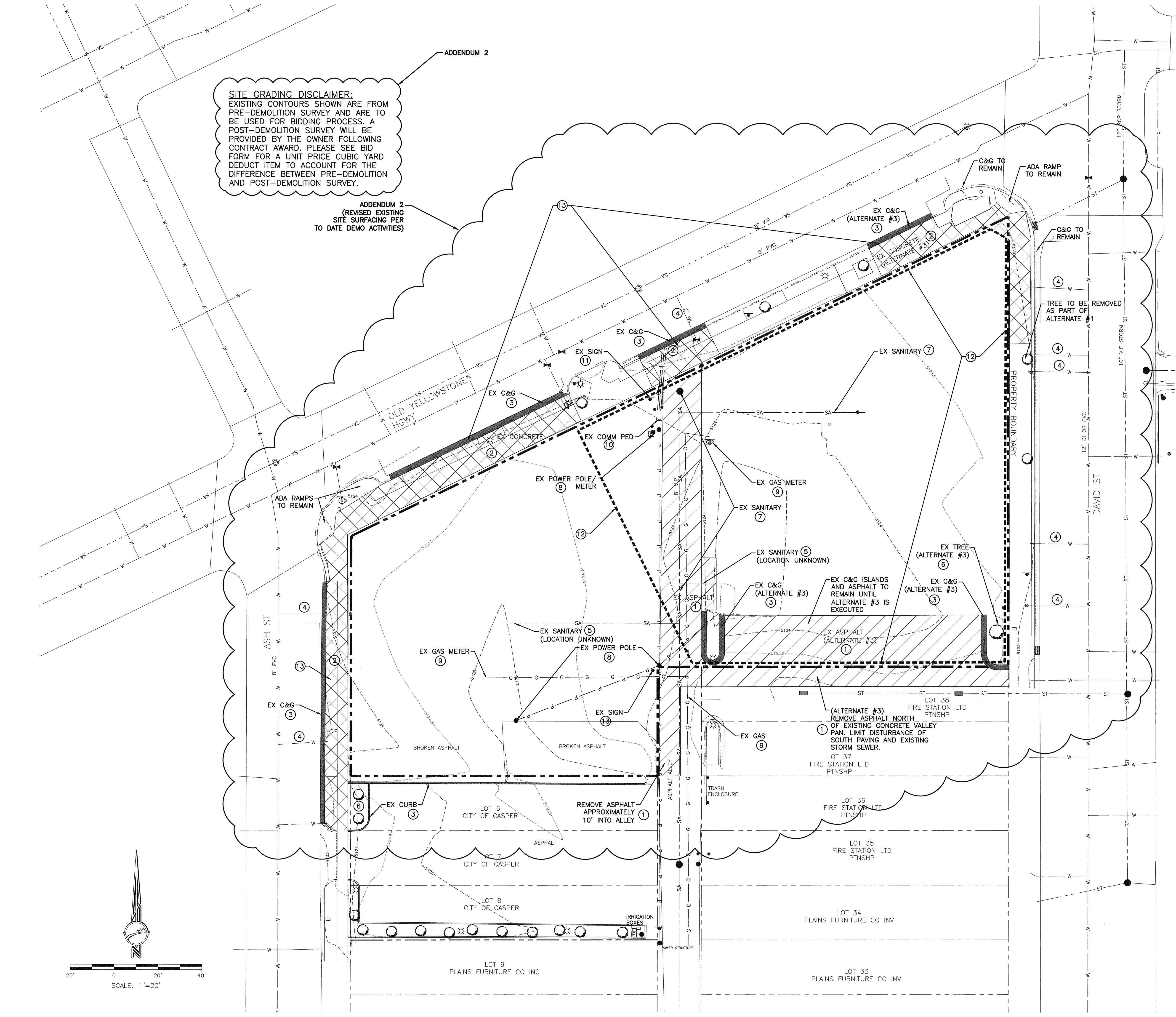
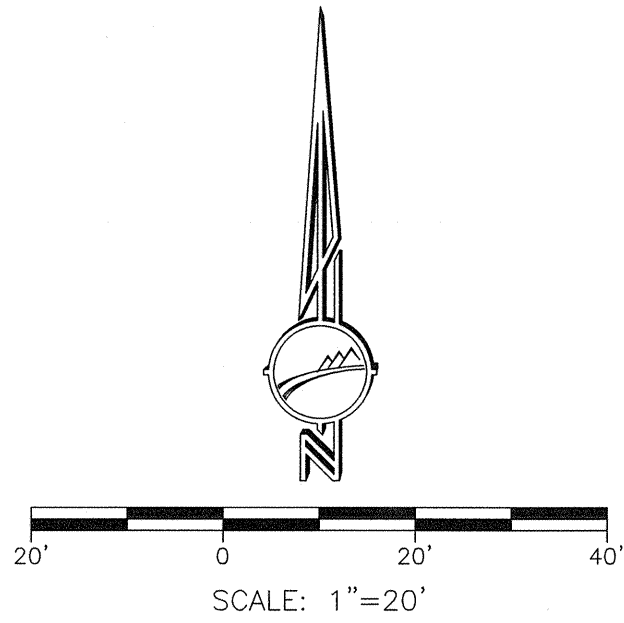
DISK ID.

SHEET TITLE
 SITE DEMO PLAN

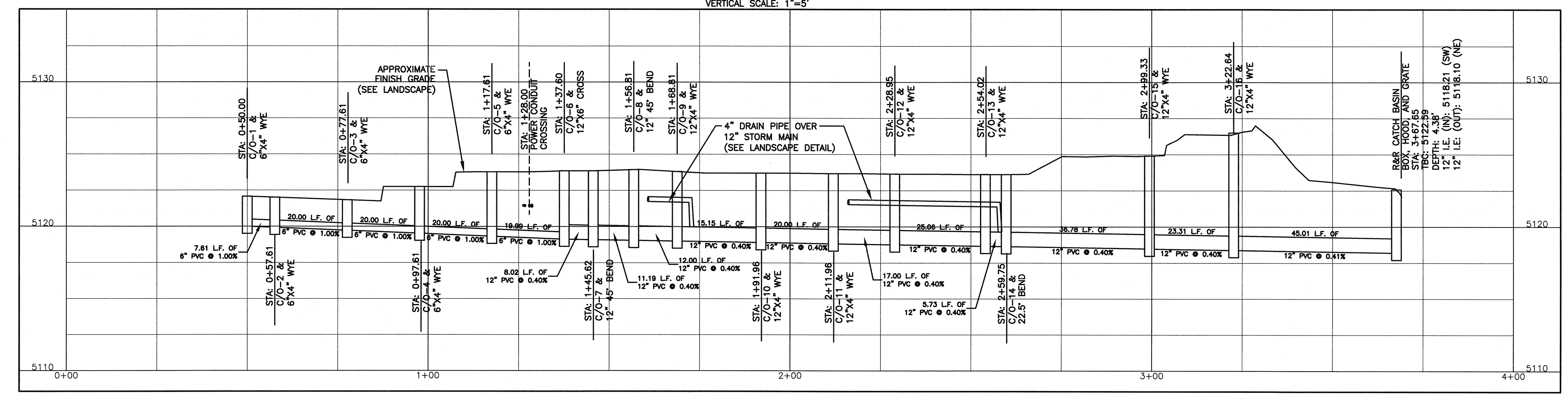
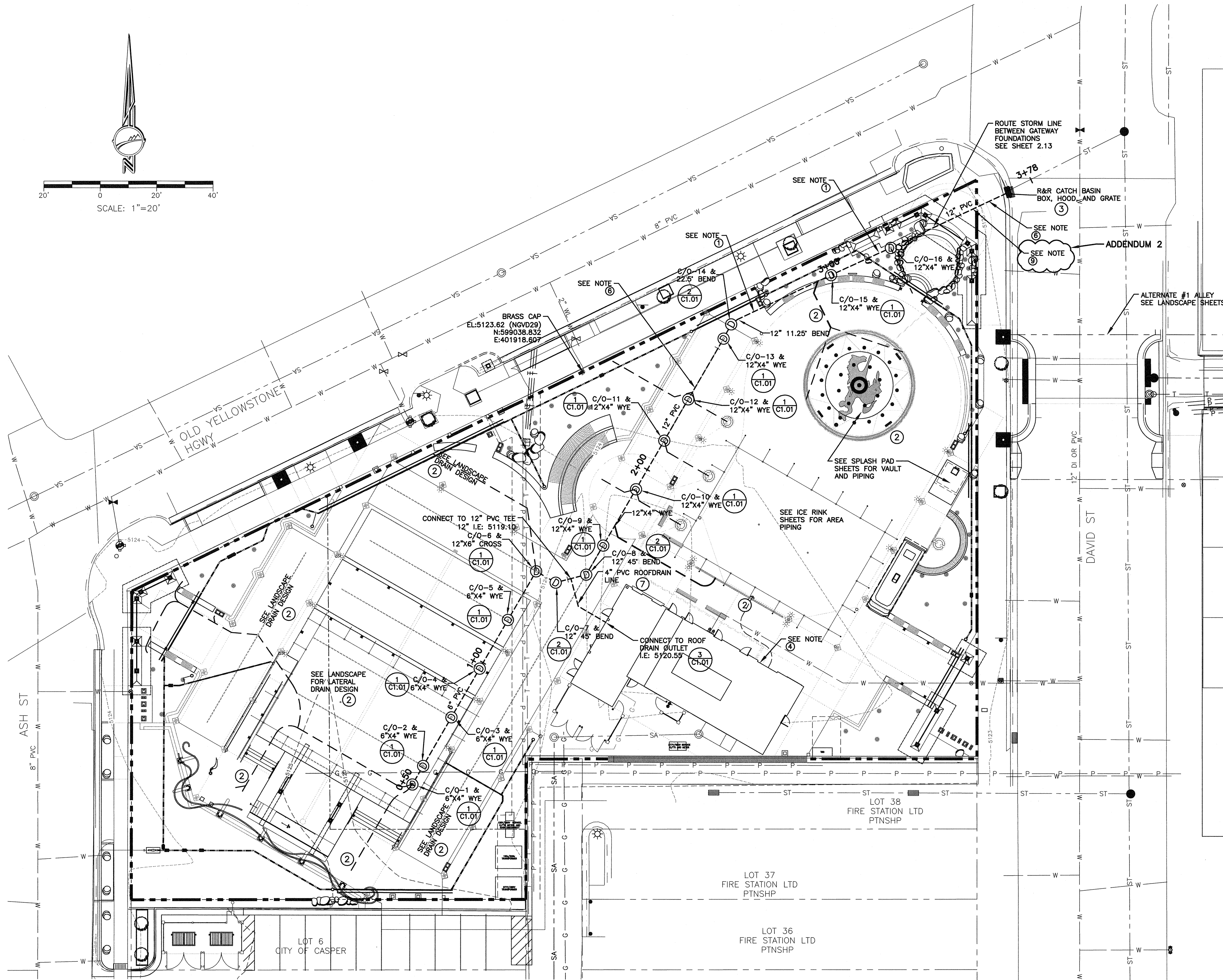


SHEET NUMBER

1.00

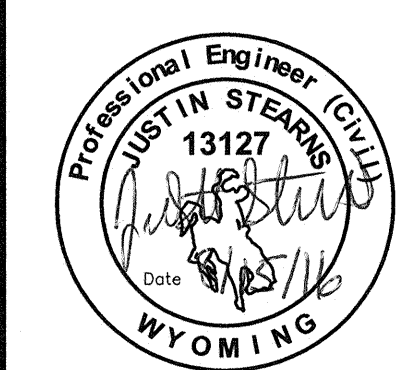


Structure Table	
Structure Name	Structure Details
C/O-1 & 6"x4" WYE	RIM: 5122.08 N:598891.955 E:401858.363 6" PVC INV IN = 5120.01
C/O-2 & 6"x4" WYE	RIM: 5122.01 N:598898.546 E:401862.169 6" PVC INV IN = 5119.93 6" PVC INV OUT = 5119.93
C/O-3 & 6"x4" WYE	RIM: 5121.83 N:598915.866 E:401872.169 6" PVC INV IN = 5119.73 6" PVC INV OUT = 5119.73
C/O-4 & 6"x4" WYE	RIM: 5122.75 N:598933.187 E:401882.169 6" PVC INV IN = 5119.53 6" PVC INV OUT = 5119.53
C/O-5 & 6"x4" WYE	RIM: 5123.78 N:598950.507 E:401892.169 6" PVC INV IN = 5119.33 6" PVC INV OUT = 5119.33
C/O-6 & 12"x6" CROSS	RIM: 5123.86 N:598967.818 E:401902.163 6" PVC INV IN = 5119.13 12" PVC INV OUT = 5119.13
C/O-7 & 12" 45° BEND	RIM: 5123.85 N:598963.788 E:401909.097 12" PVC INV IN = 5119.10 12" PVC INV OUT = 5119.10
C/O-8 & 12" 45° BEND	RIM: 5123.93 N:598966.654 E:401919.914 12" PVC INV IN = 5119.06 12" PVC INV OUT = 5119.06
C/O-9 & 12"x4" WYE	RIM: 5123.81 N:598977.018 E:401925.966 12" PVC INV IN = 5119.01 12" PVC INV OUT = 5119.01
C/O-10 & 12"x4" WYE	RIM: 5123.70 N:598997.061 E:401937.544 12" PVC INV IN = 5118.92 12" PVC INV OUT = 5118.92
C/O-11 & 12"x4" WYE	RIM: 5123.68 N:599014.369 E:401947.565 12" PVC INV IN = 5118.84 12" PVC INV OUT = 5118.84
C/O-12 & 12"x4" WYE	RIM: 5123.65 N:599029.088 E:401956.063 12" PVC INV IN = 5118.77 12" PVC INV OUT = 5118.77
C/O-13 & 12"x4" WYE	RIM: 5123.63 N:599050.792 E:401968.594 12" PVC INV IN = 5118.67 12" PVC INV OUT = 5118.67
C/O-14 & 22.5° BEND	RIM: 5123.62 N:599055.849 E:401971.296 12" PVC INV IN = 5118.65 12" PVC INV OUT = 5118.64
C/O-15 & 12"x4" WYE	RIM: 5124.91 N:599073.347 E:402006.741 12" PVC INV IN = 5118.49 12" PVC INV OUT = 5118.49
C/O-16 & 12"x4" WYE	RIM: 5126.50 N:599083.048 E:402027.938 12" PVC INV IN = 5118.39 12" PVC INV OUT = 5118.39
R&R CATCH BASIN BOX, HOOD, AND GRATE	RIM: 5122.59 N:599102.315 E:402066.614 12" PVC INV IN = 5118.21

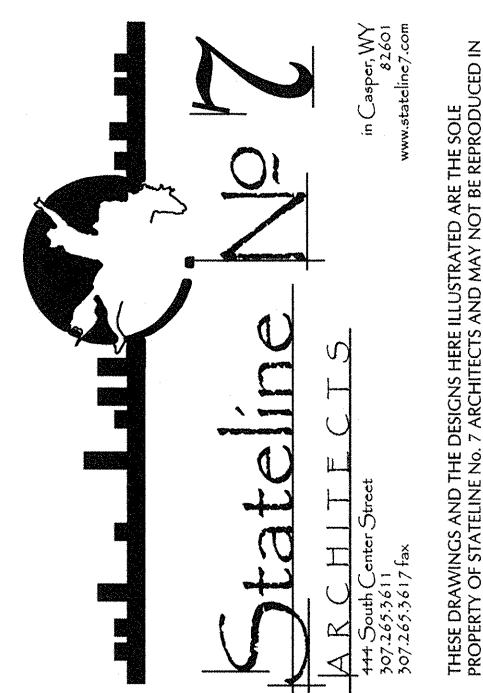


- LEGEND**
- PROPERTY BOUNDARY
 - - - EX MAJOR CONTOUR
 - - - EX MINOR CONTOUR
 - - - PROPOSED STORM
 - SA --- SANITARY
 - W --- WATER
 - ST --- STORM
 - P --- POWER
 - G --- GAS
 - T --- COMMUNICATIONS
 - ⊙ PROPOSED CLEANOUT
 - PROPOSED CATCH BASIN
 - ⊕ EX FIRE HYDRANT
 - ⊕ EX VALVE
 - ⊕ EX STREET LIGHT
 - ⊕ EX GAS METER
 - ⊕ EX INLET
 - ⊕ CURBSTOP
 - ⊕ SAN MANHOLE

- ADDENDUM 2**
- NOTES:**
- 1 STORM PIPE INSTALLATION FROM STATION 2+75 TO 3+70 MAY ENCOUNTER SAND SLURRY FILL MATERIAL. SAND SLURRY MAY BE USED AS BACKFILL IF DETERMINED TO BE ADEQUATE.
 - 2 SEE LANDSCAPE DRAINAGE PLAN SHEET FOR ALL SITE DRAINAGE DESIGN INCLUDING TRENCH DRAINS, AREA DRAINS, LAWN AREA DRAIN LINES, AND PERMEABLE BRICK UNDER DRAIN.
 - 3 ROW SURFACING REMOVAL FOR CATCH BASIN INSATLLATION SHALL BE COORDINATED TO ENSURE ALL ASPHALT, SIDEWALK AND CURB AND GUTTER IS REPLACED IMMEDIATELY.
 - 4 SEE ARCHITECTURAL DRAWINGS FOR BUILDING PERIMETER DRAIN (ALTERNATE #3)
 - 5 C/O RIM ELEVATIONS ARE APPROXIMATE. REFER TO GRADE ELEVATION ON LANDSCAPE DRAWINGS.
 - 6 ALL STORM MAIN LINE SHOWN ON THIS SHEET SHALL BE INSTALLED AS PART OF THE BASE BID. LATERAL LINES SHALL BE STUBBED OUT 15.0' AT ALL LOCATIONS.
 - 7 INSTALL ROOF DRAIN LINE UP TO FUTURE BUILDING.
 - 8 REFER TO SHEET 0.20 FOR BASE BID AND ALTERNATE DELINEATION.
 - 9 STATION 3+55.00: EXISTING 12"-18" CONCRETE BUILDING FOUNDATION WALL. CONTRACTOR TO PENETRATE OR REMOVE FOR STORM LINE INSTALLATION WHERE NECESSARY.



DAVID STREET STATION
200 SOUTH DAVID STREET
CASPER, WYOMING 82601



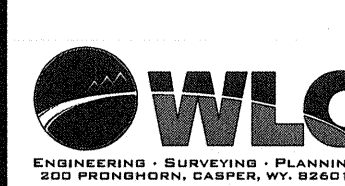
PROJECT NUMBER
15-015

DATE
MAY 10, 2016

DRAWN BY
JLS

DISK ID.

SHEET TITLE
CIVIL STORM DRAINAGE

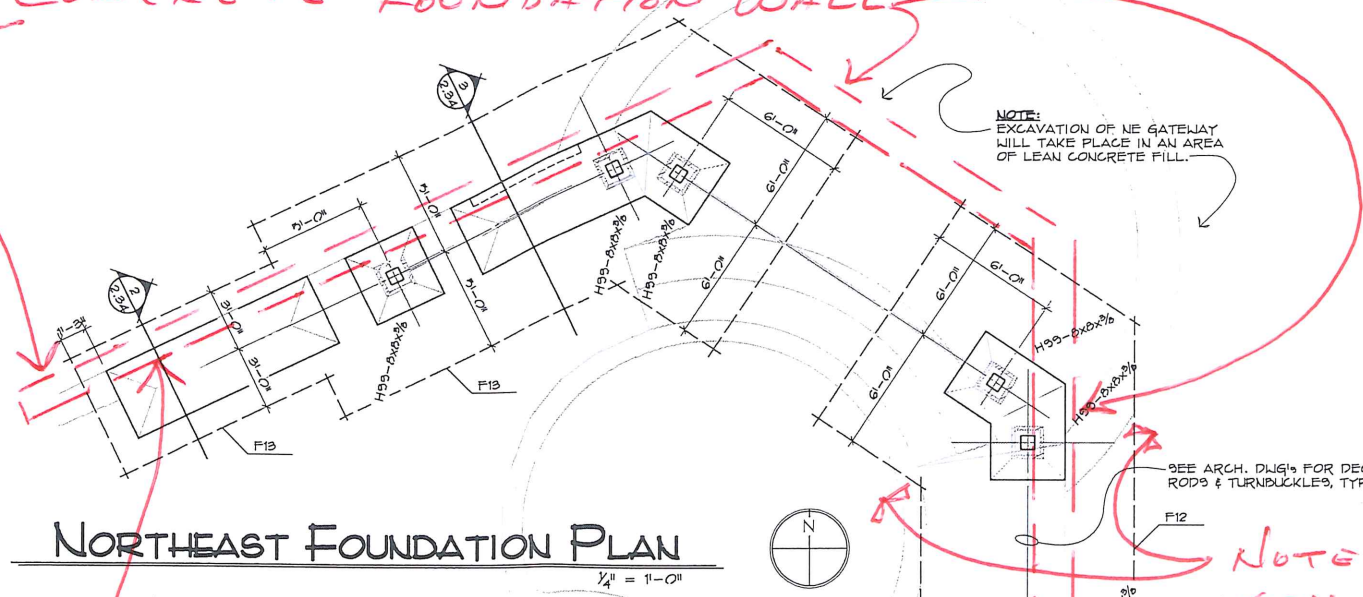


SHEET NUMBER

1.03

EXISTING 16" THICK UNREINFORCED CONCRETE FOUNDATION WALL

OWNERSHIP OF DOCUMENTS
 This document and the ideas and designs incorporated herein as an instrument of professional service, is the property of LOWE & CO., P.C. and it not to be used, in whole or in part for any other project without written authorization of LOWE & CO., P.C.



NOTE: EXCAVATION OF NE GATEWAY WILL TAKE PLACE IN AN AREA OF LEAN CONCRETE FILL.

SEE ARCH. DWG'S FOR DECORATIVE RODS & TURNBUCKLES, TYPICAL.

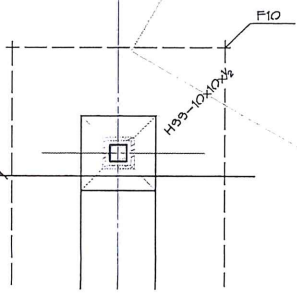
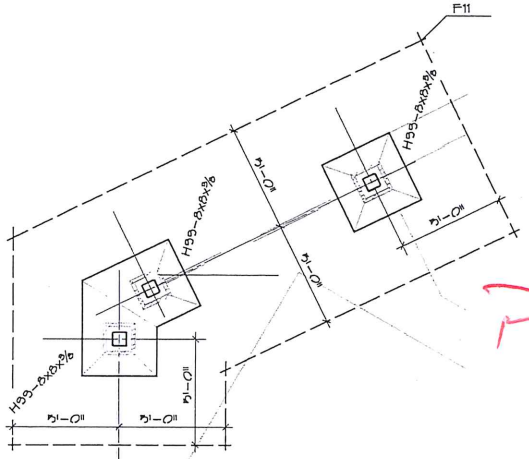
NORTHEAST FOUNDATION PLAN

1/4" = 1'-0"

DEMOLISH EXISTING CONCRETE WALL TO FOOTING SUBGRADE ELEVATION.

NOTE: IN PLACE SOILS THIS AREA ARE SANDS. FOOTING SUBGRADE THIS AREA MUST BE SUB-EXCAVATED 2'-0" MOISTURE CONDITIONED & RECOMPACTED TO 95% ASTM D698.

PARTIAL SHEET 2.13



FOOTING SCHEDULE					
TYPE	SIZE			REINFORCING	
	WIDTH	LENGTH	THICK	TRANS.	LONG.
F9	10'-0"	10'-0"	16"	(10) - #7	(10) - #7
F10	10'-0"	24'-0"	16"	(24) - #7	(10) - #7
F11	SEE PLAN		16"	#7 Bottom @ 12"oc Each Way	
F12	SEE PLAN		16"	#7 Bottom @ 12"oc Each Way	
F13	SEE PLAN		16"	#7 Bottom @ 12"oc Each Way	

NOTES:
 - TOP OF FOOTING = 4'-0" BELOW FINISH GRADE, UNLESS NOTED OTHERWISE THIS:
 REF: ARCH./CIVIL/LANDSCAPE FOR GRADE.

**REVISED BID FORM
DAVID STREET STATION
200 SOUTH DAVID STREET
CASPER, WYOMING**

This proposal is herewith submitted in accordance with your Advertisement inviting proposals to be received for the project identified as:

David Street Station
200 South David Street
Casper, Wyoming

The undersigned herein agrees to furnish all labor, materials, equipment and services to accomplish the work required in accordance with the contract documents including Addendum Numbers _____, _____, _____, and _____, issued thereto for the following sums:

BASE BID: Provide and install project improvements in the project area as indicated on sheet 0.20 including demolition, general, civil, landscape, mechanical, electrical, splash pad, ice rink and audio/visual items as shown on the plans and described within these specifications.

For the Sum of: _____ Dollars (\$ _____)

ALTERNATES & ALLOWANCES (NOTE: Bidders to hold alternate prices for 180 days past the bid date)

ALTERNATE #1: Alley Reconstruction:

Under Alternate #1, provide and install alley improvements in the project area as indicated on sheet 0.20 including demolition, general, civil, landscape and electrical items as shown on the plans and described within these specifications.

ADD for the Sum of: _____ Dollars (\$ _____)

ALTERNATE #2: Audio/Visual/Electrical Shed:

Under Alternate #2, provide and install shed building and audio/visual in the project area as indicated on sheet 0.20 including demolition, general, civil, landscape, mechanical, electrical and audio/visual items as shown on the plans and described within these specifications..

ADD for the Sum of: _____ Dollars (\$ _____)

ALTERNATE #3: Building/Splash Pad/Ice Rink:

Under Alternate #3, provide and install project improvements in the project area as indicated on sheet 0.20 including demolition, general, civil, landscape, mechanical, electrical, splash pad, ice rink and audio/visual items as shown on the plans and described within these specifications..

ADD for the Sum of: _____ Dollars (\$ _____)

UNIT PRICE:

Under Unit Price, existing contours from pre-demolition survey have been provided on the civil drawings and are to be used for bidding purposes. A post demolition survey will be provided by the owner/civil engineer following contract award.

Provide unit price per cubic yard excavation and haul-off deduct to account for the difference between pre-demolition and post-demolition surveys. **DEDUCT** for the Sum of: _____ Dollars (\$ _____) per cubic yard.

In submitting this proposal, it is understood that the right is reserved by the Owner to reject any and all bids and all proposals or to waive any informalities therein, and it is agreed that this proposal may not be withdrawn for a period of 30 days after the date of opening of these proposals.

If a Corporation, name of State: _____

If a Partnership, state full names of all co-partners:

Date: _____, 2016 Firm Name: _____

By: _____ Official Address: _____ (Seal, if any)

Title: _____

SECTION 101400 – SIGNAGE -Site Signs

PART 1 - GENERAL

1.1 RELATED DOCUMENTS

- A. Drawings and general provisions of the Contract, including General and Supplementary Conditions and Division 01 Specification Sections, apply to this Section.

1.2 SUMMARY

- A. This Section includes the following:
 - 1. Plaques.
 - 2. Panel signs.

1.3 SUBMITTALS

- A. Product Data: For each type of product indicated.
- B. Shop Drawings: Show fabrication and installation details for signs.
 - 1. Show sign mounting heights, locations of supplementary supports to be provided by others, and accessories.
 - 2. Provide message list, typestyles, graphic elements and layout for each sign.
- C. Samples for Verification: For each of the following products and for the full range of color, texture, and sign material indicated, of sizes indicated:
 - 1. Aluminum: For each form, finish, and color, on 6-inch- long sections of extrusions and squares of sheet at least 4 by 4 inches.
 - 2. Alupalite: Square of sheet at least 4 by 4 inches.
- D. Sign Schedule: Use same designations indicated on Drawings.
- E. Maintenance Data: For signs to include in maintenance manuals.
- F. Warranty: Special warranty specified in this Section.

1.4 PROJECT CONDITIONS

- A. Weather Limitations: Proceed with installation only when existing and forecasted weather conditions permit installation of signs in exterior locations to be performed according to manufacturers' written instructions and warranty requirements.
- B. Field Measurements: Verify recess openings by field measurements before fabrication and indicate measurements on Shop Drawings.

1.5 COORDINATION

- A. Coordinate placement of anchorage devices with templates for installing signs.

1.6 WARRANTY

- A. Special Warranty: Manufacturer's standard form in which manufacturer agrees to repair or replace components of signs that fail in materials or workmanship within specified warranty period.
 - 1. Failures include, but are not limited to, the following:

- a. Deterioration of metal and polymer finishes beyond normal weathering.
 - b. Deterioration of embedded graphic image colors and sign lamination.
2. Warranty Period: Five years from date of Substantial Completion.

PART 2 - PRODUCTS

2.1 MATERIALS

- A. Aluminum Sheet and Plate: ASTM B 209, alloy and temper recommended by aluminum producer and finisher for type of use and finish indicated, and with at least the strength and durability properties of Alloy 5005-H32.
- B. Applied Vinyl: Die-cut characters from vinyl film of nominal thickness of 3 mils with pressure-sensitive adhesive backing, suitable for exterior applications.

- C. Alupalite: 10mm 0.012" painted aluminum face with corrugated polyallomer core x 2 / 0.012" painted aluminum back

1. MISCELLANEOUS PROPERTIES:

- a. Properties Units 6mm 10mm
- b. Weight lb/ft2 avg. 0.78 0.99
- c. Strength L/180 0.040" Aluminum = 1 16.9 48.5
1) AAMA L/175 0.040" Aluminum = 1 74 213
- d. Wind Load mph 120+ 240+
1) (for 4' x 8' panel supported on four sides)
- e. Max. Warp inches 0.141 0.083
1) (20°F difference from front to back)

2. Warranty: Glue Bond – 5 year limited warranty

- a. Chalking – No change greater than 8 units over 10 years, measured per ASTM D-4214
- b. Fade/Color Change – No change greater than 8 E units (CIE L*a*b*) color difference measured using ASTM D-2244
- c. Paint – Typical polyester paint finish that will not crack, chip, flake, peel (10-year warranty)
- d. Fire Rating: ASTM E84: Class A flame spread rating
- e. Bond Test: ASTM C481-A modified, cyclic aging: PASS
- f. Average Outdoor Life Expectancy: 10 years

2.2 ACCESSORIES

- A. Anchors and Inserts: Provide nonferrous-metal or hot-dip galvanized anchors and inserts for exterior installations and elsewhere as required for corrosion resistance. Use toothed steel or lead expansion-bolt devices for drilled-in-place anchors. Furnish inserts, as required, to be set into concrete or masonry work.

2.3 FABRICATION

- A. General: Provide manufacturer's standard signs of configurations indicated.
 - 1. Welded Connections: Comply with AWS standards for recommended practices in shop welding. Provide welds behind finished surfaces without distortion or discoloration of exposed side. Clean exposed welded surfaces of welding flux and dress exposed and contact surfaces.
 - 2. Mill joints to tight, hairline fit. Form joints exposed to weather to exclude water penetration.

3. Preassemble signs in the shop to greatest extent possible. Disassemble signs only as necessary for shipping and handling limitations. Clearly mark units for reassembly and installation, in location not exposed to view after final assembly.
4. Conceal fasteners if possible; otherwise, locate fasteners where they will be inconspicuous.

2.4 FINISHES, GENERAL

- A. Comply with NAAMM's "Metal Finishes Manual for Architectural and Metal Products" for recommendations for applying and designating finishes.
- B. Protect mechanical finishes on exposed surfaces from damage by applying a strippable, temporary protective covering before shipping.
- C. Appearance of Finished Work: Variations in appearance of abutting or adjacent pieces are acceptable if they are within one-half of the range of approved Samples. Noticeable variations in the same piece are not acceptable. Variations in appearance of other components are acceptable if they are within the range of approved Samples and are assembled or installed to minimize contrast.

2.5 ALUMINUM FINISHES

- A. Clear Anodic Finish: Manufacturer's standard Class 1 clear anodic coating, 0.018 mm or thicker, over a polished (buffed) nonspecular as fabricated mechanical finish, complying with AAMA 611.

2.6 STEEL FINISHES

- A. Surface Preparation: Remove mill scale and rust, if present, from uncoated steel, complying with SSPC-SP 5/NACE No. 1, "White Metal Blast Cleaning," or SSPC-SP 8, "Pickling."
- B. Factory Priming for Painted Finish: Apply shop primer specified below immediately after surface preparation and pretreatment.
 1. Shop Primer: Manufacturer's or fabricator's standard, fast-curing, lead- and chromate-free, universal primer, selected for resistance to normal atmospheric corrosion, for compatibility with substrate and field-applied finish paint system indicated, and for capability to provide a sound foundation for field-applied topcoats despite prolonged exposure.
- C. Baked-Enamel Finish: Immediately after cleaning and pretreating, apply manufacturer's standard two-coat, baked-enamel finish consisting of prime coat and thermosetting topcoat. Comply with paint manufacturer's written instructions for applying and baking to achieve a minimum dry film thickness of 2 mils.

2.7 STAINLESS-STEEL FINISHES

- A. Remove tool and die marks and stretch lines or blend into finish. Grind and polish surfaces to produce uniform, directionally textured, polished finish indicated, free of cross scratches. Run grain with long dimension of each piece.
- B. Directional Satin Finish: No. 4 finish.
- C. Mirrorlike Reflective, Nondirectional Polish: No. 8 finish.
- D. When polishing is completed, passivate and rinse surfaces. Remove embedded foreign matter and leave surfaces chemically clean.

PART 3 - EXECUTION

3.1 EXAMINATION

- A. Examine substrates, areas, and conditions, with Installer present, for compliance with requirements for installation tolerances and other conditions affecting performance of work.
- B. Proceed with installation only after unsatisfactory conditions have been corrected.

3.2 INSTALLATION

- A. Locate signs and accessories where indicated, using mounting methods of types described and complying with manufacturer's written instructions.
 - 1. Install signs level, plumb, and at heights indicated, with sign surfaces free of distortion and other defects in appearance.
 - 2. Interior Wall Signs: Install signs on walls adjacent to latch side of door where applicable. Where not indicated or possible, such as double doors, install signs on nearest adjacent walls. Locate to allow approach within 3 inches of sign without encountering protruding objects or standing within swing of door.
- B. Wall-Mounted Signs: Comply with sign manufacturer's written instructions except where more stringent requirements apply.
 - 1. Mechanical Fasteners: Use nonremovable mechanical fasteners placed through predrilled holes. Attach signs with fasteners and anchors suitable for secure attachment to substrate as recommended in writing by sign manufacturer.
- C. Bracket-Mounted Signs: Provide manufacturer's standard brackets, fittings, and hardware for mounting signs that project at right angles from walls and ceilings. Attach brackets and fittings securely to walls and ceilings with concealed fasteners and anchoring devices to comply with manufacturer's written instructions.

3.3 CLEANING AND PROTECTION

- A. After installation, clean soiled sign surfaces according to manufacturer's written instructions. Protect signs from damage until acceptance by Owner.

END OF SECTION 101400